



**Proudly hosted by**  
**Port Moody Amateur Hockey Association & City of Port Moody**  
**15-19 March 2025**

**Updated 8 February 2025**



k<sup>w</sup>ik<sup>w</sup>əłəm

**Kwikwetlem First Nation**



**Tsleil-Waututh Nation**

PEOPLE OF THE INLET

We live and play on the ancestral and unceded homelands of the k<sup>w</sup>ik<sup>w</sup>əłəm (Kwikwetlem), səliłwətał (Tsleil-Waututh), x<sup>w</sup>məθk<sup>w</sup>əyəm (Musqueam), Sḵwəxwú7mesh (Squamish), qíćəý (Katzie), q<sup>w</sup>a:ń ł'əń (Kwantlen), qiqéyt (Qayqayt), and Stó:lō (Sto:lo) Peoples, and extend appreciation for the opportunity to enjoy this territory.

We are grateful to these Coast Salish Nations for their stewardship and protection, past and present, of the land, water and air that we all rely on. And we acknowledge and appreciate their generosity of spirit in sharing their knowledge and teachings with Port Moody residents and visitors.



**Musqueam  
First Nation**

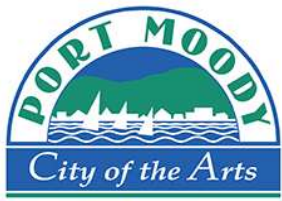


SḶWƏXWÚ7MESH ÚXWUMIXW  
**SQUAMISH NATION**



q<sup>w</sup>a:ńłəń

Kwantlen First Nation



# Welcome to Port Moody, BC

Prior to the arrival of Europeans, the Coast Salish First Nations communities lived along the southern coast, including area known as Port Moody, BC. Dialects of their language were spoken even further south. The mild climate and plentiful resources of this region allowed a number of First Nations groups to live in the area, including the Sanetch, Cowichan, Nanaimo, Homalco, Sechelt, Squamish, Muskwiam, and the Tsawwassen.

It has been reported that two of these groups, the Squamish and Muskwiam came to Port Moody during the summer season to set up camps at the mouths of local streams for the purpose of hunting and gathering shellfish in preparation for the winter season.



Early settler history in Port Moody was dominated by two events: the 1858 gold rush in the Fraser Valley and the 1886 arrival of the first transcontinental train. With the sudden appearance of thousands of gold prospectors in the Fraser Valley, and the need to develop a back-door defence for the burgeoning town of New Westminster, the Royal Engineers (commanded by Col. Richard Moody, after whom Port Moody was named in 1859) were directed to clear a trail from the new capital of British Columbia to the Burrard Inlet.



# Committee Contacts

If you have questions, these are the people with the answers...

## Chair

Allen Wales  
1<sup>st</sup> Vice President, PMAHA  
778-388-1571  
a.d.wales@gmail.com

## Asst. Chair

Tim Goodsell  
U18A1 Team Manager, PMAHA  
604-339-7462  
timgoodsell@ymail.com





# Schedule

15-19 March 2025

## **SATURDAY MARCH 15 – HERITAGE WOODS SECONDARY SCHOOL**

- 4:30-4:45 BANQUET ARRIVAL
- 5:00-5:30 WELCOME & SPEECHES
- 5:30-7:00 AWARD WINNING BBQ DINNER
- 7:00 MANDATORY COACHES MEETING WITH BC HOCKEY
- 8:15-10:45 3 PRACTICE ICE TIMES AVAILABLE – CONTACT CHAIR

## **DAY 1 : SUNDAY MARCH 16 – ARENA 1, PORT MOODY REC CENTRE**

- 8:00 A1 vs A3
- 10:45 B1 vs PORT MOODY A1
- 1:30 A2 vs A4
- 4:15 B2 vs B4
- 7:00 OPENING CEREMONIES
- 7:30 PORT MOODY A1 vs B5

## **DAY 2: MONDAY MARCH 17 – ARENA 1, PORT MOODY REC CENTRE**

- 8:00 B2 vs B1
- 10:45 A3 vs A2
- 1:30 B4 vs B5
- 4:15 A4 vs A1
- 7:00 PORT MOODY A1 vs B2

## **DAY 3 : TUESDAY MARCH 18 – ARENA 1, PORT MOODY REC CENTRE**

- 7:00 B1 vs B4
- 9:30 B5 vs B2
- 12:00 A1 vs A2
- 2:30 A3 vs A4
- 5:00 B5 vs B1
- 7:30 B4 vs PORT MOODY A1

## **DAY 4 : WEDNESDAY MARCH 19 – ARENA 1, PORT MOODY REC CENTRE**

- 8:00 1st Div A vs 2nd Div B
- 11:00 1st Div B vs 2nd Div A
- 5:00 Bronze Medal 🏅
- 8:00 Gold Medal 🏆

# Pre-Tournament Practice Times

15 March 2025

## **SATURDAY MARCH 15 – PORT MOODY REC CENTRE**

8:15-9:15pm          ARENA 1

8:30-9:30pm          ARENA 2

9:45-10:45pm        ARENA 2

Due to PMAHA hosting our March Madness Initiation Tournament March 14-16 we have a shortage of practice ice available in Port Moody and at this time and may be unable to offer every team 1hr of practice ice time. If we are unable to offer all teams 1hr of practice ice time we will likely hold a draw.

We are still exploring options at the time of this version of the document but our nearby rinks in Coquitlam are hosting U18T1 and Port Coquitlam are hosting Tri-City Predators Tournament.

To express an interest in one of these ice times after qualification please contact our Chair : **Allen Wales via text on 778-388-1571**

# Skate Sharpening & Hockey Shops

Great local options for sharpening and equipment needs

SPORT CHEK



## SportChek, Coquitlam Mall

[2929 Barnet Hwy Unit 1400, Coquitlam, BC V3B 5R5](#)

Distance from arena : 3.4km = 8m drive



## Cyclone Taylor Source for Sports Coquitlam

[1020 Austin Ave, Coquitlam, BC V3K 3P1](#)

Distance from arena : 7km = 14m drive



## Rocket Rods

[2300 Rocket Way, Coquitlam, BC V3K 6Z2](#)

Distance from arena : 9km = 14m drive



## Scoff's Hockey Shop

[2927 Norland Ave, Burnaby, BC V5B 3A9](#)

Distance from arena : 17m = 21m drive



## The Hockey Shop

[20202 66 Ave Building F1, Langley, BC V2Y 2X4](#)

Distance from arena : 28km = 27m drive



# Equipment Checklist

Only players that comply with inspection will be permitted to play



British Columbia Amateur Hockey Association 6671 Oldfield Road Saanichton BC V8M 2A1  
 Ph: 250.652.2978 Fax: 250.652.4536 info@bchockey.net www.bchockey.net

## EQUIPMENT CHECKLIST

EQUIPMENT	INSPECT	BASIC THINGS TO LOOK FOR
PANTS	Condition	<ul style="list-style-type: none"> <li>- No tears, loose threads &amp;/or dangling belts/straps.</li> <li>- Inside zippers done up and working.</li> </ul>
STICK		<ul style="list-style-type: none"> <li>- Plug is in butt end of the stick (top).</li> <li>- Blade has no sharp edges, breakages</li> </ul>
HELMET	Condition	<ul style="list-style-type: none"> <li>- Must have visible CSA label, snug chin strap, ear guards, be tape free &amp; not painted.</li> <li>- Numbers, team decals and decals supporting a cause (ie. Humbolt, Cancer etc.) are permitted</li> <li>- No cracks in shell or padding.</li> </ul>
FACEMASK	Condition	<ul style="list-style-type: none"> <li>- No metal bars broken on cages</li> <li>- Tight screws and if replacements, NOT too long.</li> <li>- Straps snug with stretch in elastic</li> <li>- Clips in place.</li> <li>- NO cracks in plastic</li> <li>- watch for rust at wire seams</li> </ul>
GLOVES	Condition	<ul style="list-style-type: none"> <li>- High enough so covers wrist. Firm fingers, thumb and back padding</li> <li>- Palms soft and pliable. NO holes near fingers or in palm larger than a quarter)</li> <li>- No loose threads</li> </ul>
NECKGUARD	Condition	<ul style="list-style-type: none"> <li>- Fits snug enough around neck</li> <li>- MUST have BNQ certification, be free of fabric cuts</li> <li>- Velcro strap NOT worn and in good working order</li> <li>- Must not be altered in any way</li> <li>- Rips or tears should be sewn.</li> <li>- No tape wrapped around neckguard</li> </ul>





# Championship Apparel

<https://bchockeyu18tier2championship.itemorder.com/shop/sale/>


**ORDER NOW**



Russell Athletic Dri-Power® Fleece Hoodie

**\$69.99**

2 Colors



Russell Athletic Youth Dri-Power® Fleece Hoodie

**\$64.99**

2 Colors



Russell Men's Fleece Crew Neck Sweatshirt

**\$64.99**

2 Colors



ATC Adult Everyday Cotton Blend Tee

**\$24.99**

2 Colors



ATC Youth Everyday Cotton Blend Tee

**\$24.99**

2 Colors



Atc™ Game Day Fleece Ladies' Sweatshirt


**\$69.99**



ATC Ladies' Everyday Cotton Tee

**\$24.99**

2 Colors



Lowry Travel Bag

**\$74.99**



Pacific Adult Trucker Mesh Cap

**\$29.99**



Augusta Sportswear Pom Beanie

**\$29.99**



Augusta Sportswear Knit Beanie

**\$27.99**



Lowry Backpack

**\$79.99**

2 Colors

# On Ice Venue

Arena 1 - Port Moody Recreation Centre  
300 Ioco Rd, Port Moody, BC V3H 2V7



# Banquet Venue

Saturday March 15

Heritage Woods Secondary School  
1300 David Ave, Port Moody, BC V3H 5K6



## SCHEDULE

4:30-4:45pm

BANQUET ARRIVAL (PARKING FRONT & REAR)

5:00-5:30pm

WELCOME & SPEECHES

5:30-7.00pm

AWARD WINNING BBQ DINNER

7:00pm

BC HOCKEY MANDATORY COACHES MEETING



CANADIAN  
NATIONAL CHAMPION

# Banquet Menu

Saturday March 15

## Meats

### Slow Smoked Beef Brisket

Slow smoked 12 hours and topped with a Peppery Bold BBQ sauce

### St. Louis Cut Spareribs

Smoked and finished with Championship Sweet Rib Sauce

### BBQ chicken

Served with an Alabama white BBQ sauce

### Veggie Pulled Pork Sammies

Shredded Oyster Mushroom and Jack fruit with bread & butter pickles, slivered white onion and world championship VEGAN BBQ sauce

## Sides

### Pit Beans

A medley of beans slowly smoked and cooked directly below all the ribs.  
Cooked in a sweet heat sauce. (Veggie option available)

### Spinach Salad

Topped with Pecans, goats' cheese, fresh oranges, red onion, and tossed with a lemon poppy seed dressing

### Pasta Salad

Pasta shells tossed with a tangy mayo dressing. Topped with cheese and peppers (always a favorite)

### Corn Bread

Served with a sweet honey butter drizzle





# Fair Play Award



Awarded Tuesday March 18

The **Fair Play Award** will be presented to team that exemplifies sportsmanship, respect for opponents, officials and clean, ethical play throughout the BC Championships U18 Tier 2 event.

While specific awards may vary depending on the league or governing body, the concept is consistent: recognizing those who uphold the spirit of the game with dignity and integrity.

Positive behavior by parents in the stands at a hockey game is essential for fostering a positive and supportive environment for the players, officials and other spectators.

This year, the fair play award will be given to the team that shows the most sportsmanlike behavior both ON and OFF the ice. This includes the behavior of the players, the coaches and the parents.

We will be looking at behaviors of the team and coaches on the ice. How they treat the referees, how they win or lose with dignity and to a degree, the penalties. Major penalties and game misconducts will also be looked at.

Positive behavior by hockey players in our small town contributes to a strong sense of community, sets a positive example for younger athletes, and enhances the overall spirit of the game.

Positive behavior by hockey coaches is essential for creating a positive and productive environment for players, fostering their growth both as athletes and individuals. Coaches serve as role models and leaders, influencing not only their team's success but also the culture of our sport.



# Team Photos, Logo, Video & Raffle

Please send to [firstvp@pmaha.com](mailto:firstvp@pmaha.com)

## Tournament Program

Provided we get all the content that we need from our teams we hope to create a BC Championship Program that will help make this a memorable event for your family.

## Official Team Photo

Highest resolution jpg or png will be required for use in the program and the other printed material. Please include team roster and list of everyone in the order they appear in the photo including their jersey number.

## Minor Hockey Association Logo

Please send a high resolution image: .ai .pdf .jpg or .png of your association logo and your home jersey colors

## Contact information

Please provide Head Coach and Managers names and contact numbers, advise where you will be staying and when your team expects to arrive when travel is organized.

## Team Video

A short video showcasing your team and where they come from. These videos will be used in our banquet, also shown on our social media. You can use any format you would like. Should be a light hearted or funny video and keeping up with the spirit of team work and comradery.

Please send team picture, team logo, video and information to [firstvp@pmaha.com](mailto:firstvp@pmaha.com)

## Raffle Basket Donation

Please bring a basket to add to our raffle basket table with items that represent the town that you come from would be awesome and help us offset the costs of hosting this prestigious event. This is not mandatory but would be highly appreciated and go to further the sense of community we wish to establish for our Provincial games.

## 50/50

We are working on an online 50/50 and hope to be able to offer an incentive to all teams – the team that sells the most tickets pre-tournament will get 50% of their ticket sales refunded! There will be 50/50s running all event. More to follow ...

# Accommodation

The Lower Mainland has many accommodation options ...



To assist Teams finding accommodation we can offer a Concierge Reservation Service via Meeting Max. Expect local accommodation around Port Moody to be very limited primarily due to Coquitlam MHA (<5km away) block booking hotels for BC Championships U18T1 running on the same dates.

Contact Kelly via email [kelly@meetingmax.cc](mailto:kelly@meetingmax.cc)



# Transportation



The closest Skytrain station to our arena is **INLET CENTRE STATION @ 2.5km (14m walk)**



Fleet of coaches (23) stationed in Vancouver, well suited to serve groups of all sizes, 50-500 passengers.

## **Fleet & Features...**

- Fleet of 23 highway coaches.
- 54, 47, 27, & 20 passenger capacities.
- 54 passenger coach feature 3 point Seatbelts & [WiFi](#)
- Professional trained & experienced drivers.
- Washroom, PA Systems, Panoramic Windows
- Ample Bag Storage
- All coaches are GPS Monitored, tracked, and logged hours of service.

Thank you for your consideration of our charter motor coach and driver services for your groups.

**Brad Sidjak**  
**International Stage Lines**  
**4171 Vanguard Road,**  
**Richmond, BC, Canada, V6X 2P6**

**T: 604-270-6135 x 201**  
**F: 604-270-8162**  
**C: 604-671-8106 (text / whatsapp)**

\* Email: [brad@islbus.com](mailto:brad@islbus.com)  
\* Website: [www.islbus.com](http://www.islbus.com)



# What to do in Port Moody



THE  
*Parkside*  
BREWERY



  
YELLOW DOG  
— BREWING CO. —

**MOODY**  
ALES



**BRAVE**  
BREWING COMPANY

*Brewer's Row*  
port moody, b.c.

With SIX unique operations on Brewers Row, beer lovers agree that Port Moody is anything but sleepy—it's a destination...

It will only take you five minutes to stroll Brewers Row from end to end, but of course, you'll want to stop at each of the breweries along the way. You will find a range of approaches to brewing to suit everyone's tastes—from beer beginners to hopheads, barrel freaks and sour seekers. They do offer some food options, but all the breweries encourage you to visit the food trucks parked out front on Murray Street.

# What to do in Port Moody



**Rocky Point Ice Cream** is a must-visit destination for ice cream lovers! Located in a charming setting in Rocky Point Park, this family-owned creamery is known for its rich, handcrafted ice cream made from high-quality, locally sourced ingredients.

🍦 **Unique & Delicious Flavors** – From classic favorites like chocolate and vanilla to creative seasonal specials, there's something for everyone.

🐄 **Farm-Fresh Ingredients** – Made with fresh dairy and real ingredients, their ice cream is free of artificial additives.

If you're looking for a local gem with top-quality ice cream, Rocky Point Ice Cream is the place to go! 🍦

# Team Dinner Venues



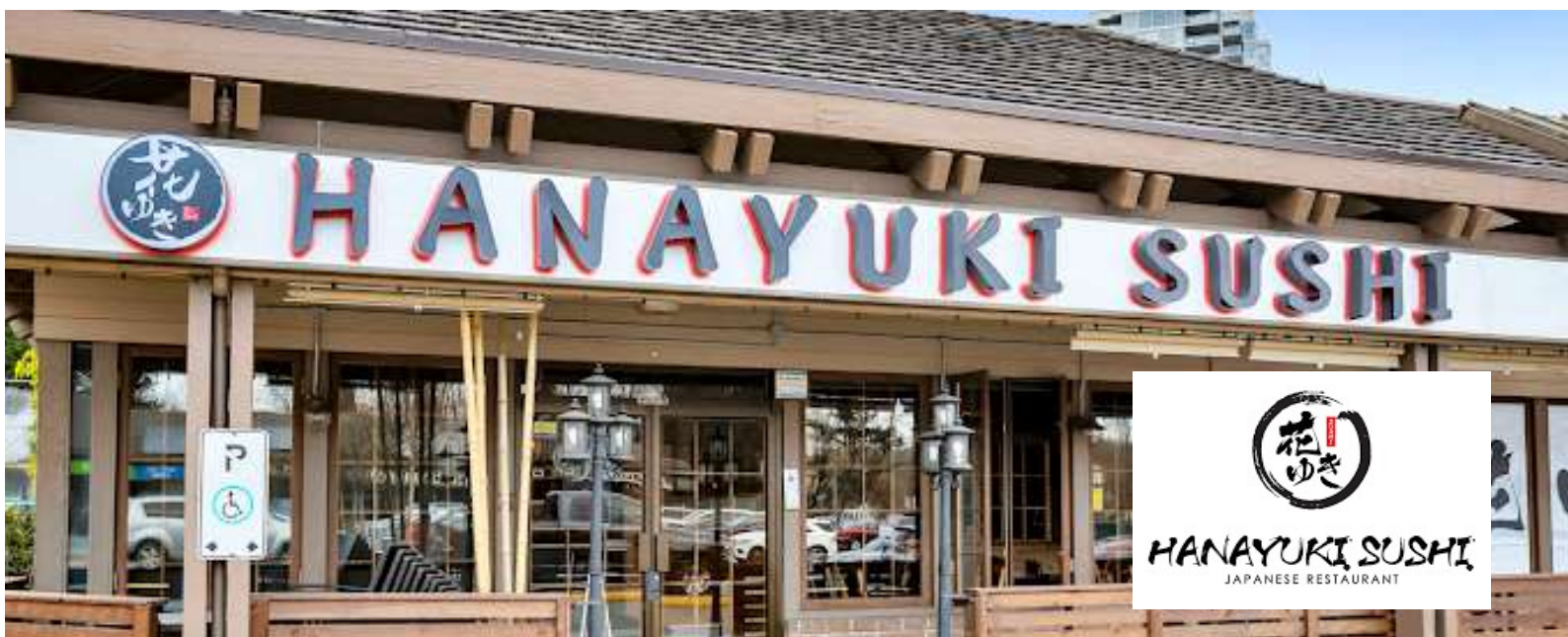
**Boston Pizza Restaurants & Sports Bars** in nearby Port Coquitlam and also in Coquitlam are a fantastic spot for delicious food, a lively atmosphere and a great dining experience! Whether you're craving a casual meal with friends, a family dinner or a place to watch a hockey game...

🍕 **Wide Variety of Delicious Food** – From signature pizzas and gourmet pastas to burgers, wings, and salads, there's something for everyone.

🏒 **Great for Hockey Team Dinners** – Not many of our local restaurants can cope with a full Hockey Team dining, but Boston Pizza never disappoints if you reserve ahead

# Great Local Restaurants

Probably not suited to team dinners but great locations all the same ...



# Great Local Restaurants

Probably not suited to team dinners but great locations all the same ...



# Medical Facilities

In the event of player injury...

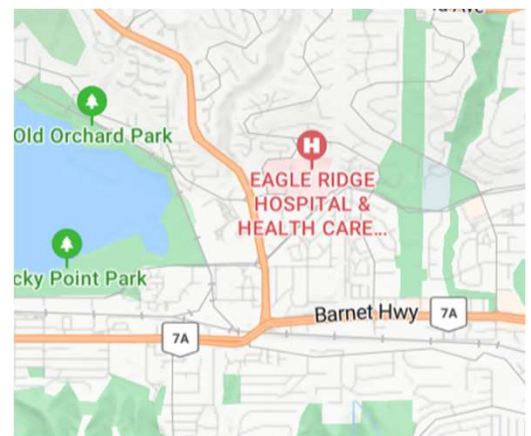


## Eagle Ridge Hospital: Emergency Room

475 Guildford Wy, Port Moody, BC V3H 3W9

850m from Recreation Centre = 3m drive

*Call 911 in an emergency*



# Map of Port Moody

Nearby venues of note ...



Heritage Woods Secondary School (Banquet)

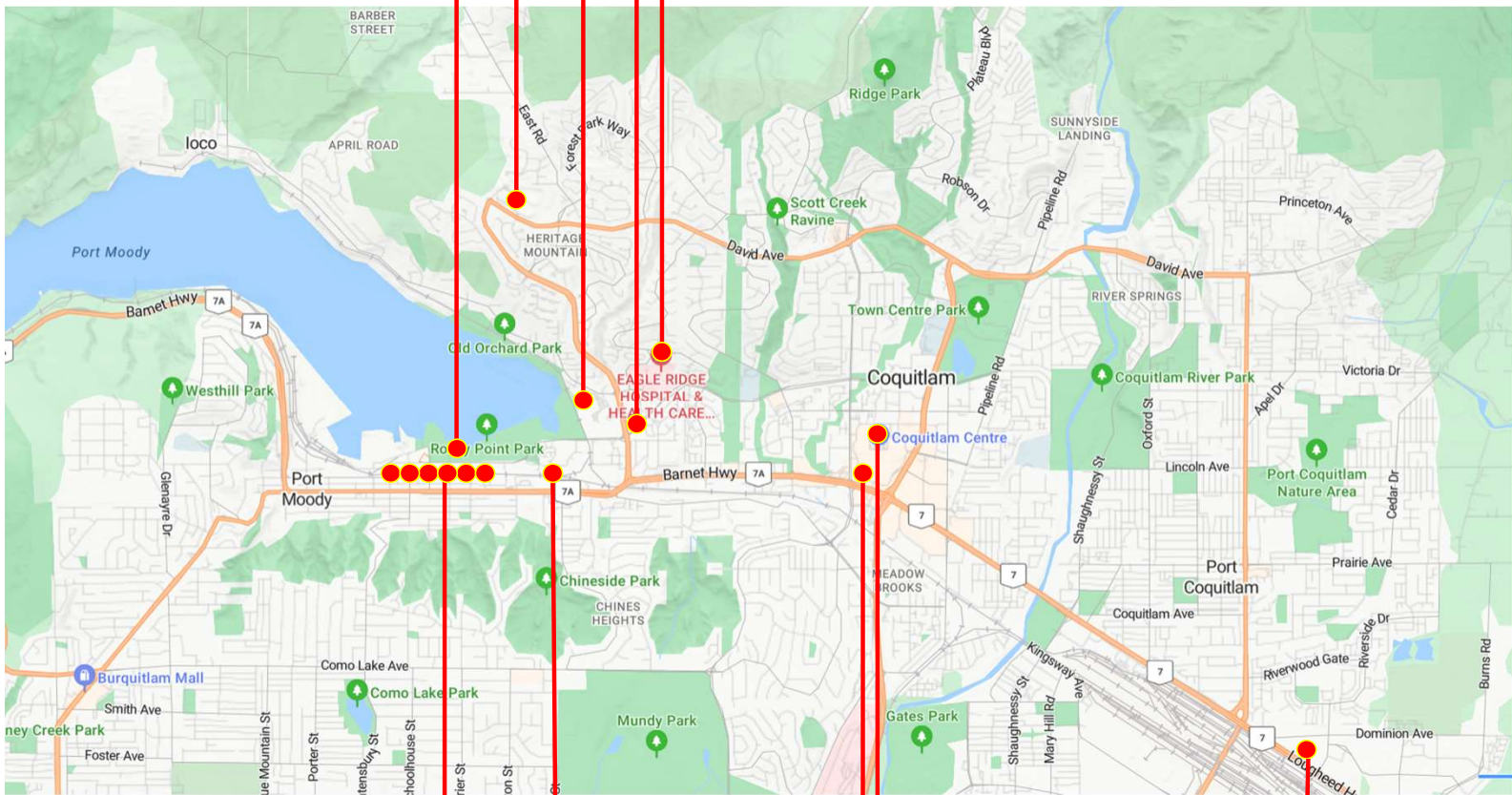
Port Moody Recreation Centre

Browns Social House / Hanayuki Sushi / St. James Well

Eagle Ridge ER



Rocky Point Ice Cream



Brewers Row

Coquitlam Mall

Boston Pizza



Mama Said Pizza

Cactus Club



# Good luck to all teams



## Who will be our U18 TIER 2 BC Hockey Champions in 2025 ?

On behalf of all Port Moody players and parents, we would like to wish all players, coaches, and teams the best of luck as you hit the ice for the BC Hockey Championships U18 Tier 2

Play hard, support your teammates and enjoy every moment of the competition. No matter the outcome, your dedication and passion for the game make you all champions.

Skate fast, play smart, and have fun—let's make this an unforgettable tournament!



Go teams go! 🎉 🔥



# Thankyou Platinum Sponsors



**TheHockeyShop.com**

It's a great day for hockey.

# Thankyou Government of BC

## Community Gaming Grants Funding community programs

On behalf of the Port Moody minor hockey community, we extend our heartfelt gratitude to the Government of British Columbia for their generous support via our BC Community Gaming Grant. Your funding plays a crucial role in providing young athletes with the opportunity to develop their skills, build lifelong friendships, and foster a love for the game of hockey.

This support helps us create a positive and inclusive environment where players can thrive both on and off the ice. Thank you for investing in the future of our athletes and our community!

